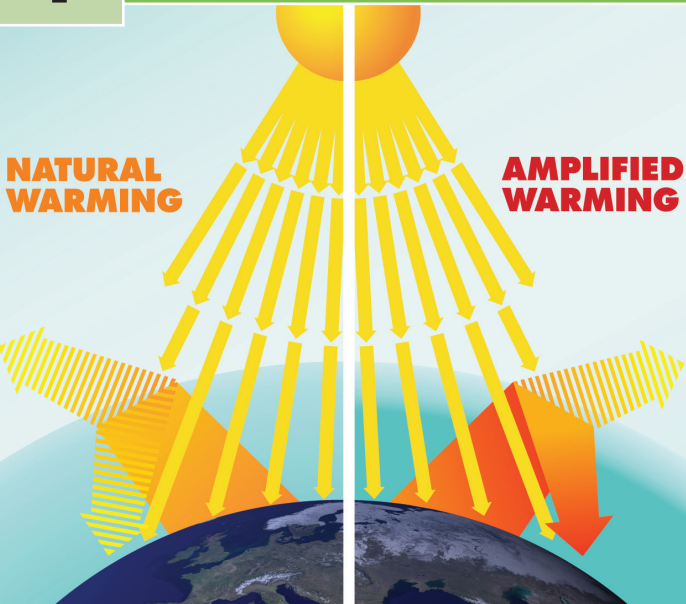


CLIMATE LITERACY: The Essential Principles of Climate Science

Each essential principle is supported by fundamental concepts comparable to those underlying the National Science Education Standards (NSES) and the American Association for the Advancement of Science (AAAS) Benchmarks for Science Literacy.

1

THE SUN IS THE PRIMARY SOURCE OF ENERGY FOR EARTH'S CLIMATE SYSTEM.



The greenhouse effect is a natural phenomenon whereby heat-trapping gases in the atmosphere, primarily water vapor, keep the Earth's surface warm. Human activities, primarily burning fossil fuels and changing land cover patterns, are increasing the concentrations of some of these gases, amplifying the natural greenhouse effect.

- A. Sunlight reaching the Earth can heat the land, ocean, and atmosphere. Some of that sunlight is reflected back to space by the surface, clouds, or ice. Much of the sunlight that reaches Earth is absorbed and warms the planet.
- B. When Earth emits the same amount of energy as it absorbs, its energy budget is in balance, and its average temperature remains stable.

- C. The tilt of Earth's axis relative to its orbit around the Sun results in predictable changes in the duration of daylight and the amount of sunlight received at any latitude throughout a year. These changes cause the annual cycle of seasons and associated temperature changes.
- D. Gradual changes in Earth's rotation and orbit around the Sun change the intensity of sunlight received in our planet's polar and equatorial regions. For at least the last 1 million years, these changes occurred in 100,000-year cycles that produced ice ages and the shorter warm periods between them.
- E. A significant increase or decrease in the Sun's energy output would cause Earth to warm or cool. Satellite measurements taken over the past 30 years show that the Sun's energy output has changed only slightly and in both directions. These changes in the Sun's energy are thought to be too small to be the cause of the recent warming observed on Earth.

Sources: Modified from the Marine, Koehn and Science Museum of the National Academy of Sciences "Global Warming: Facts & Our Future" 2004

2

CLIMATE IS REGULATED BY COMPLEX INTERACTIONS AMONG COMPONENTS OF THE EARTH SYSTEM.

- A. Earth's climate is influenced by interactions involving the Sun, ocean, atmosphere, clouds, ice, land, and life. Climate varies by region as a result of local differences in these interactions.
- B. Covering 70% of Earth's surface, the ocean exerts a major control on climate by dominating Earth's energy and water cycles. It has the capacity to absorb large amounts of solar energy. Heat and water vapor are redistributed globally through density-driven ocean currents and atmospheric circulation. Changes in ocean circulation caused by tectonic movements or large influxes of fresh water from

melting polar ice can lead to significant and even abrupt changes in climate, both locally and on global scales.

- C. The amount of solar energy absorbed or radiated by Earth is modulated by the atmosphere and depends on its composition. Greenhouse gases—such as water vapor, carbon dioxide, and methane—occur naturally in small amounts and absorb and release heat energy more efficiently than abundant atmospheric gases like nitrogen and oxygen. Small increases in carbon dioxide concentration have a large effect on the climate system.
- D. The abundance of greenhouse gases in the atmosphere is controlled by biogeochemical cycles that continually move these components between their ocean, land, life, and atmosphere reservoirs. The abundance of carbon in the atmosphere is reduced through seafloor accumulation of marine sediments and accumulation of plant biomass and is increased through deforestation and the burning of fossil fuels as well as through other processes.
- E. Airborne particulates, called "aerosols," have a complex effect on Earth's energy balance: they can cause both cooling, by reflecting incoming sunlight back out to space, and warming, by absorbing and



Solar power drives Earth's climate. Energy from the Sun heats the surface, warms the atmosphere, and powers the ocean currents.

Sources: Astronaut photograph (ISS015-E-16489, courtesy NASA) JSC Gateway to Astronaut Photography of Earth

releasing heat energy in the atmosphere. Small solid and liquid particles can be lofted into the atmosphere through a variety of natural and man-made processes, including volcanic eruptions, sea spray, forest fires, and emissions generated through human activities.

- F. The interconnectedness of Earth's systems means that a significant change in any one component of the climate system can influence the equilibrium of the entire Earth system. Positive feedback loops can amplify these effects and trigger abrupt changes in the climate system. These complex interactions may result in climate change that is more rapid and on a larger scale than projected by current climate models.

3

LIFE ON EARTH DEPENDS ON, IS SHAPED BY, AND AFFECTS CLIMATE.

- A. Individual organisms survive within specific ranges of temperature, precipitation, humidity, and sunlight. Organisms exposed to climate conditions outside their normal range must adapt or migrate, or they will perish.
- B. The presence of small amounts of heat-trapping greenhouse gases in the atmosphere warms Earth's surface, resulting in a planet that sustains liquid water and life.
- C. Changes in climate conditions can affect the health and function of ecosystems and the survival of entire species. The distribution patterns of fossils show evidence of gradual as well as abrupt extinctions related to climate change in the past.
- D. A range of natural records shows that the last 10,000 years have been an unusually stable period in Earth's climate history. Modern human societies developed during this time. The agricultural, economic, and transportation systems we rely upon are vulnerable if the climate changes significantly.

Source: Steve Fisher



Kelp forests and their associated communities of organisms live in cool waters off the coast of California.

- E. Life—including microbes, plants, and animals and humans—is a major driver of the global carbon cycle and can influence global climate by modifying the chemical makeup of the atmosphere. The geologic record shows that life has significantly altered the atmosphere during Earth's history.

4

CLIMATE VARIES OVER SPACE AND TIME THROUGH BOTH NATURAL AND MAN-MADE PROCESSES.

- A. Climate is determined by the long-term pattern of temperature and precipitation averages and extremes at a location. Climate descriptions can refer to areas that are local, regional, or global in extent. Climate can be described for different time intervals, such as decades, years, seasons, months, or specific dates of the year.
- B. Climate is not the same thing as weather. Weather is the minute-by-minute variable condition of the atmosphere on a local scale. Climate is a conceptual description of an area's average weather conditions and the extent to which those conditions vary over long time intervals.
- C. Climate change is a significant and persistent change in an area's average climate conditions or their extremes. Seasonal variations and multi-year cycles (for example, the El Niño Southern Oscillation) that produce warm, cool, wet, or dry periods across different regions are a natural part of climate variability. They do not represent climate change.
- D. Scientific observations indicate that global climate has changed in the past, is changing now, and will change in the future. The magnitude and direction of this change is not the same at all locations on Earth.



Muir Glacier, August 1941. William O. Field

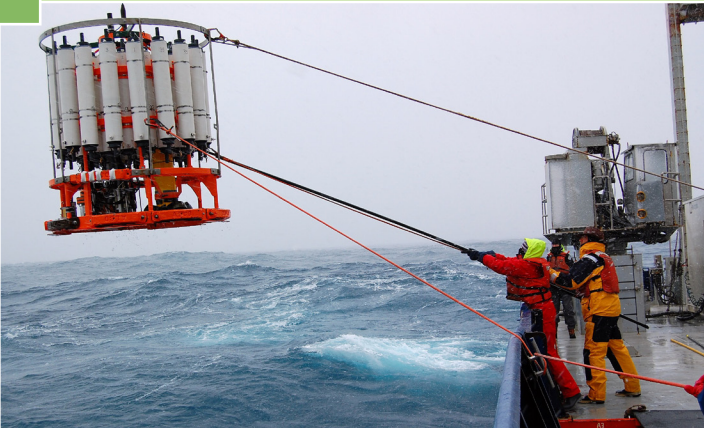
Muir Glacier, August 2004. Bruce F. Molnia

Sources: National Snow and Ice Data Center; W. O. Field; B. F. Molnia

- E. Based on evidence from tree rings, other natural records, and scientific observations made around the world, Earth's average temperature is now warmer than it has been for at least the past 1,300 years. Average temperatures have increased markedly in the past 50 years, especially in the North Polar Region.
- F. Natural processes driving Earth's long-term climate variability do not explain the rapid climate change observed in recent decades. The only explanation that is consistent with all available evidence is that human impacts are playing an increasing role in climate change. Future changes in climate may be rapid compared to historical changes.
- G. Natural processes that remove carbon dioxide from the atmosphere operate slowly when compared to the processes that are now adding it to the atmosphere. Thus, carbon dioxide introduced into the atmosphere today may remain there for a century or more. Other greenhouse gases, including some created by humans, may remain in the atmosphere for thousands of years.

5

OUR UNDERSTANDING OF THE CLIMATE SYSTEM IS IMPROVED THROUGH OBSERVATIONS, THEORETICAL STUDIES, AND MODELING.



Source: B. Longworth © 2008

A rosette device containing 36 seawater samples is retrieved in the Southern Ocean. Seawater samples from various depths are analyzed to measure the ocean's carbon balance.

- A. The components and processes of Earth's climate system are subject to the same physical laws as the rest of the Universe. Therefore, the behavior of the climate system can be understood and predicted through careful, systematic study.
- B. Environmental observations are the foundation for understanding the climate system. From the bottom of the ocean to the surface of the Sun, instruments on weather stations, buoys, satellites, and other platforms collect climate data. To learn about past climates, scientists use

natural records, such as tree rings, ice cores, and sedimentary layers. Historical observations, such as native knowledge and personal journals, also document past climate change.

- C. Observations, experiments, and theory are used to construct and refine computer models that represent the climate system and make predictions about its future behavior. Results from these models lead to better understanding of the linkages between the atmosphere-ocean system and climate conditions and inspire more observations and experiments. Over time, this iterative process will result in more reliable projections of future climate conditions.
- D. Our understanding of climate differs in important ways from our understanding of weather. Climate scientists' ability to predict climate patterns months, years, or decades into the future is constrained by different limitations than those faced by meteorologists in forecasting weather days to weeks into the future.¹
- E. Scientists have conducted extensive research on the fundamental characteristics of the climate system and their understanding will continue to improve. Current climate change projections are reliable enough to help humans evaluate potential decisions and actions in response to climate change.

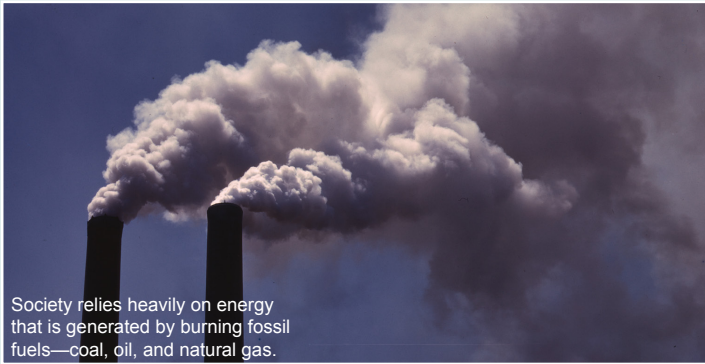
¹Based on "Climate Change: An Information Statement of the American Meteorological Society," 2007

6

HUMAN ACTIVITIES ARE IMPACTING THE CLIMATE SYSTEM.

- A. The overwhelming consensus of scientific studies on climate indicates that most of the observed increase in global average temperatures since the latter part of the 20th century is very likely due to human activities, primarily from increases in greenhouse gas concentrations resulting from the burning of fossil fuels.²
- B. Emissions from the widespread burning of fossil fuels since the start of the Industrial Revolution have increased the concentration of greenhouse gases in the atmosphere. Because these gases can remain in the atmosphere for hundreds of years before being removed by natural processes, their warming influence is projected to persist into the next century.
- C. Human activities have affected the land, oceans, and atmosphere, and these changes have altered global climate patterns. Burning fossil fuels, releasing chemicals into the atmosphere, reducing the amount of forest cover, and rapid expansion of farming, development, and industrial activities are releasing carbon dioxide into the atmosphere and changing the balance of the climate system.

- D. Growing evidence shows that changes in many physical and biological systems are linked to human-caused global warming.³ Some changes resulting from human activities have decreased the capacity of the environment to support various species and have substantially reduced ecosystem biodiversity and ecological resilience.
- E. Scientists and economists predict that there will be both positive and negative impacts from global climate change. If warming exceeds 2 to 3°C (3.6 to 5.4°F) over the next century, the consequences of the negative impacts are likely to be much greater than the consequences of the positive impacts.



Society relies heavily on energy that is generated by burning fossil fuels—coal, oil, and natural gas.

Sources: A. Palmer, 2008

²Based on IPCC, 2007: *The Physical Science Basis: Contribution of Working Group I*

³Based on IPCC, 2007: *Impacts, Adaptation and Vulnerability. Contribution of Working Group II*

7

CLIMATE CHANGE WILL HAVE CONSEQUENCES FOR THE EARTH SYSTEM AND HUMAN LIVES.

- A. Melting of ice sheets and glaciers, combined with the thermal expansion of seawater as the oceans warm, is causing sea level to rise. Seawater is beginning to move onto low-lying land and to contaminate coastal fresh water sources and beginning to submerge coastal facilities and barrier islands. Sea-level rise increases the risk of damage to homes and buildings from storm surges such as those that accompany hurricanes.
- B. Climate plays an important role in the global distribution of freshwater resources. Changing precipitation patterns and temperature conditions will alter the distribution and availability of freshwater resources, reducing reliable access to water for many people and their crops. Winter snowpack and mountain glaciers that provide water for human use are declining as a result of global warming.

- C. Incidents of extreme weather are projected to increase as a result of climate change. Many locations will see a substantial increase in the number of heat waves they experience per year and a likely decrease in episodes of severe cold. Precipitation events are expected to become less frequent but more intense in many areas, and droughts will be more frequent and severe in areas where average precipitation is projected to decrease.²

- D. The chemistry of ocean water is changed by absorption of carbon dioxide from the atmosphere. Increasing carbon dioxide levels in the atmosphere is causing ocean water to become



Sources: Iowa National Guard photo by Sgt. Chad D. Nelson

Iowa National Guard preparing to put sandbags in place on a levee in Kingston, Iowa, to protect roughly 50,000 acres of farmland threatened by flood waters.

more acidic, threatening the survival of shell-building marine species and the entire food web of which they are a part.

- E. Ecosystems on land and in the ocean have been and will continue to be disturbed by climate change. Animals, plants, bacteria, and viruses will migrate to new areas with favorable climate conditions. Infectious diseases and certain species will be able to invade areas that they did not previously inhabit.
- F. Human health and mortality rates will be affected to different degrees in specific regions of the world as a result of climate change. Although cold-related deaths are predicted to decrease, other risks are predicted to rise. The incidence and geographical range of climate-sensitive infectious diseases—such as malaria, dengue fever, and tick-borne diseases—will increase. Drought-reduced crop yields, degraded air and water quality, and increased hazards in coastal and low-lying areas will contribute to unhealthy conditions, particularly for the most vulnerable populations.³

FURTHER INFORMATION

For future revisions and changes to this document or to see documentation of the process used to develop this brochure, please visit www.climatescience.gov.

